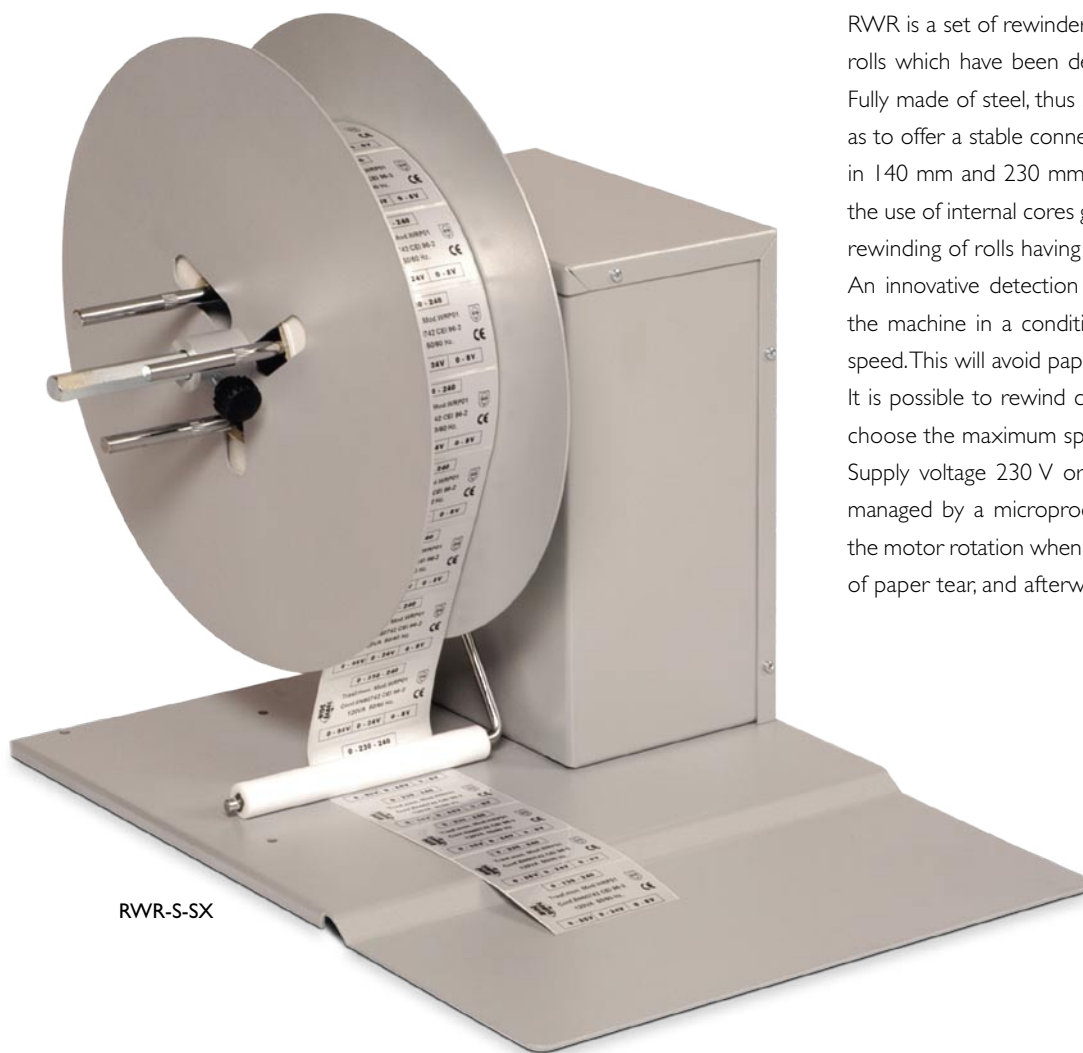


Series RWR

Rewinder for self-adhesive labels



Series RWR

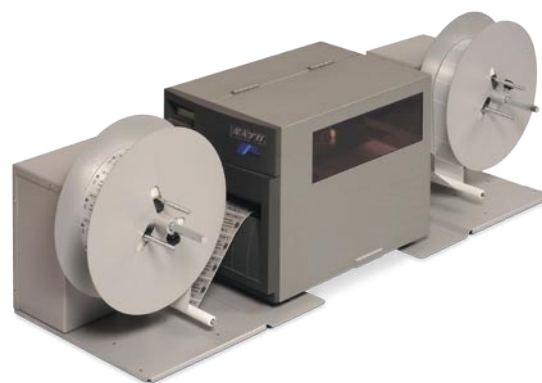


RWR-S-SX

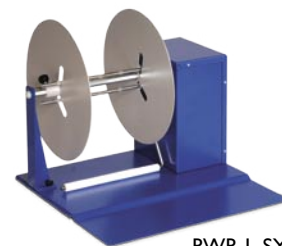
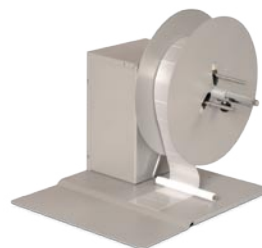
RWR is a set of rewinders/unwinders of self-adhesive labels on rolls which have been developed to suit industrial application. Fully made of steel, thus strong, they have a very large base, so as to offer a stable connection to the printer. They are available in 140 mm and 230 mm width. The adjustable spindle enables the use of internal cores going from 40 mm to 110 mm and the rewinding of rolls having a max outer diameter of 300 mm. An innovative detection system of the tension assembly puts the machine in a condition to fully adapt itself to the printer speed. This will avoid paper tears and frequent stops. It is possible to rewind clockwise or counter clockwise and to choose the maximum speed range the user wants to reach. Supply voltage 230 V or 115 V on request. The control card, managed by a microprocessor, ensures the possibility to stop the motor rotation when the roll has reached the end or in case of paper tear, and afterwards it will give out an acoustic signal.

Technical data

	RWR-S	RWR-L
Max label width	140 mm	230 mm
Speed	0-25 m/m	0-25 m/m
Roll Diameter	300 mm	300 mm
Adjustable spindle	40-110 mm	40-110 mm
Supply Voltage	230 Vac - 50 Hz	230 Vac - 50 Hz
Power consumption	30 W	30 W
Overall dimensions	330 x 410 x 370 (H)	430 x 410 x 370 (H)
Weight	13 Kg	15 Kg



UWR-S-DX



RWR-L-SX

